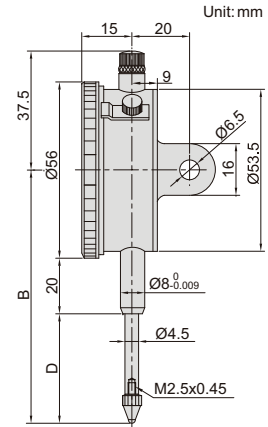


# DIAL INDICATOR



2310-30FA



- Supplied with limit pointers and bezel clamp
- Optional accessory: backs (page 135), contact points (page 131~134)

Code	Range	Graduation	Accuracy	Hysteresis	Range/rev	Dial reading	Remark	B	D
2310-20FA*	20mm	0.01mm	25 $\mu$ m	5 $\mu$ m	1mm	0-100	flat back	83mm	35mm
2310-30FA*	30mm	0.01mm	35 $\mu$ m	7 $\mu$ m	1mm	0-100	flat back	88mm	40mm
2310-20A*	20mm	0.01mm	25 $\mu$ m	5 $\mu$ m	1mm	0-100	lug back	83mm	35mm
2310-30A*	30mm	0.01mm	35 $\mu$ m	7 $\mu$ m	1mm	0-100	lug back	88mm	40mm

\* Supplied with manufacturer inspection certificate traceable to NIST USA